

Model: ZS-800P-WH

Digital Wall Switch SabbathTimer

Single-Pole, Single Throw
Battery Backup (batteries included)



Before installing your new ZmanTimer, please read this manual first.

Installation

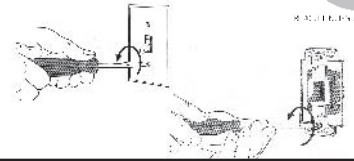
Step 1

WARNING: Turn power OFF at circuit breaker or remove fuse.



Step 2

Remove the wall plate and the existing single pole switch by its mounting screws.

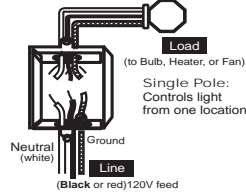


Step 3

Confirm there is a neutral line wire and that you are replacing a single pole switch.

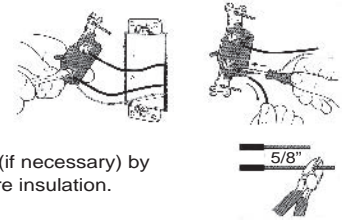
Tip: Identify and mark all neutral wires for quicker installation.

This single pole Timer works for the wiring shown below



Step 4

Disconnect wires from the switch you are replacing.



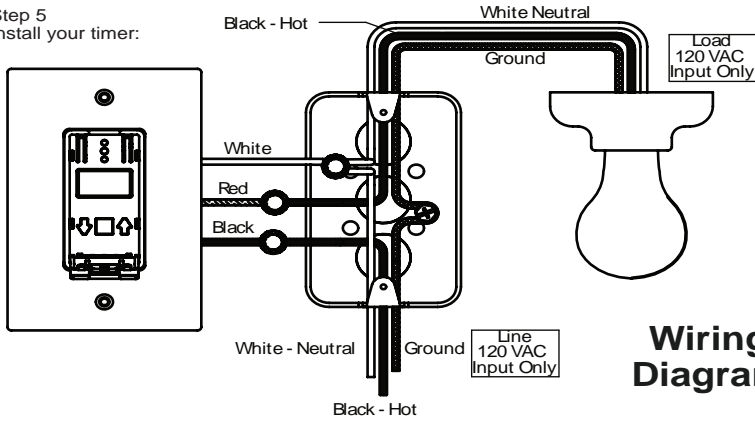
Prepare Wiring-

Prepare appropriate wires (if necessary) by stripping 5/8 inch of the wire insulation.



Step 5

Install your timer:



Wiring Diagram

Step 6

Review which wires to connect. Securely connect all wires with twist-on wire connectors provided.

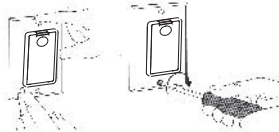
Use the wire connectors (supplied) to secure your wires as follows:

- Connect Black wire of Timer to Line side Black wire
- Connect Red wire of Timer to Load side Black wire
- Connect all 3 White wires together- White Timer wire, Line and Load

NOTE: The LINE ground and LOAD ground wires must be grounded.

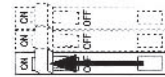
Step 7

Mount and align timer securely and then install wall plate.



Step 8

Restore power at fuse box or circuit breaker. Turn Power ON



Step 9

Test Timer: Press Main Switch

Timer Operation

After the timer is properly wired and power is restored the switch is operational. The flashing LCD screen and the flashing red LED indicate that the Time, Date and Location must be set before the Sabbath and Yom Tov mode will be active

Setting the Time

- 1) From the home screen press SET and scroll to the time.
- 2) Press SET to save

Setting the Date

- 1) From the home screen press SET and scroll to the date.
- 2) Press SET to save.

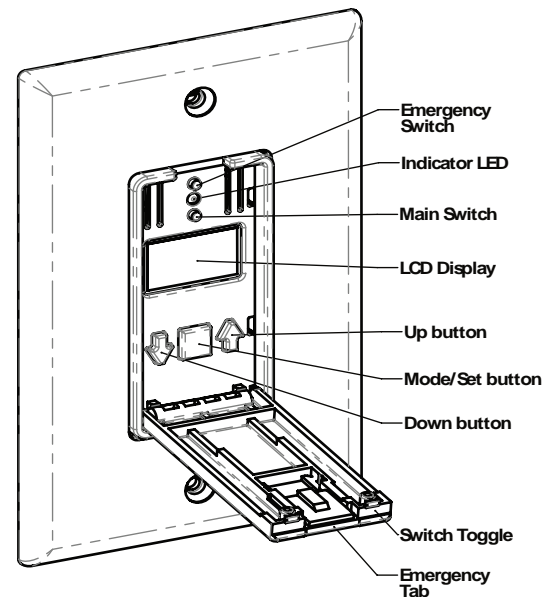
Setting the Location

- 1) From the home screen press SET and scroll to location .
 - 2) Press SET.
 - 3) Use the arrows to select your State.
 - 4) Press SET to save
 - 5) Use the arrows to select your city.
 - 6) Press SET to save.
 - 7) If your City/State is not listed see below for setting Lat/Long.
- The device will now load the default Shabbos and Yom Tov times for your location.

LATITUDE/LONGITUDE COORDINATE SETTING

- 1) If your state or corresponding city is not on the list, continue scrolling with the arrows until Lat/Long is highlighted.
- 2) Press the SET button to enter Latitude/Longitude coordinates
- 3) Use the Up/Down arrows to set the value of the highlighted digit of your latitude.
- 4) Press Menu/Set to move to the next digit.
- 5) Repeat steps 3 and 4 until latitude has been entered to two decimal places.
- 6) Press Menu/Set to save your latitude and move on to longitude.
- 7) Use the Up/Down arrows to set the value of the highlighted digit of your longitude.
- 8) Press Menu/Set to move to the next digit.
- 9) Repeat steps 7 and 8 until longitude has been entered to two decimal places.
- 10) Press Menu/Set to save your longitude.

Note: The flashing red LED will stop. Your required setup fields are complete. You will now return to the Home screen



WARNINGS:

DO NOT USE THE TIMER TO TURN OFF POWER FOR MAINTENANCE WORK (repairs, removing broken bulbs, etc.). ALWAYS TURN POWER OFF AT THE SERVICE PANEL BY REMOVING A FUSE OR TRIPPING THE CIRCUIT BREAKER BEFORE DOING ANY ELECTRIC REPAIRS
In an environment with electrostatic discharge, the unit may malfunction.

SAFETY WARNING

- Risk of Electric Shock**
- Always Turn power OFF at circuit breaker or remove fuse before installing or replacing.
 - For indoor use only.
 - Turn power OFF at circuit breaker before cleaning timer.
 - Use a soft damp cloth only.
 - Do not use in wet or damp areas.
 - Do not leave wires exposed.
 - Keep children away from timer while installing.
- Risk of Fire**
- Do not use to control irons and cooking appliances, etc.
 - For permanent installation use only 120 Volts.
 - Do not exceed the recommended electrical ratings.
 - Install in accordance with all national and local electrical codes.

Setup Options

Use the **SETUP** menu to set **DST (Daylight Savings Time)**, optional **PIN code** and **Shabbos end to your custom**

Setting PIN

From the **SETUP** menu scroll to **PIN** and select **ON/OFF**. NOTE: Pin is 9191 and cannot be changed.

Setting Nightfall

The nightfall value is the number of minutes the device will wait after sunset at the end of Sabbath /Yom Tov before reactivating (unlocking) the main switch. This sets the locking mechanism **ONLY** to revert back to weekday mode after Shabbos ends according to your custom. Timer settings will continue to follow regular times.

- 1) From the Home Screen scroll to **SETUP**
- 2) Use the arrows to scroll to **Nightfall**.
- 3) Use the arrows to cycle between 45, 60, & 72 minutes for the nightfall setting.
- 4) Press **SET** to select your setting and go back to the **SETUP** menu.

Activating Sabbath Lock Mode

- 1) From the Home screen, press the **SET** button to enter the settings menu.
- 2) Use the arrows to scroll to the Sabbath screen. By default the Sabbath mode is **ON**.
- 3) Press **SET**
- 4) Use the arrows to cycle the Sabbath mode between on/off.
- 5) Press **SET** to save your selection.
- 6) Sabbath mode **ON** is indicated by the **🔒** on the main screen.
- 7) In the event of an emergency on Shabbos use the override slider located at the top of the switch to activate the lights.

Activating Timers

ZMAN Switch is factory preset with generic Shabbos and Yom Tov Settings shown below that will function immediately after installation with no additional user input. If other settings are preferred then skip to "Setting Timers" Generic 'SABBATH' settings will apply to every Shabbos as well as Yom Kippur. Generic 'YOM TOV' Settings will apply to all other Holidays

IMPORTANT: After timers are set and stored in the system, **ACTIVATE** the timers by selecting **TIMERS** from the main menu and select **YES**. Select **NO** to deactivate the timers. The timer icon **🕒** on the home screen will indicate whether time timers are active or inactive.

PRE-PROGRAMMED SETTINGS:

- SABBATH:**
- o 1st Night, ON: Sunset – 00:30, OFF: 12:00 AM
 - o 1st Day, ON: 8:00 AM, OFF: 2:00 PM
 - o 1st Day, ON: Sunset – 02:00, OFF: Sunset +2:00

YOM TOV (All):

- o 1st Night, ON: Sunset – 00:30, OFF: 12:00 AM
- o 1st Day, ON: 8:00 AM, OFF: 2:00 PM
- o 2nd Night, ON: Sunset – 02:00, OFF: 12:00 AM
- o 2nd Day, ON: 8:00 AM, OFF: 2:00 PM
- o 2nd Day, ON: Sunset – 02:00, OFF: Sunset +2:00

Setting Timers

***Included Feature:** Up to 50 timer settings can be programmed to accommodate your personal schedule

When adding a unique schedule to a specific Holiday (e.g.: Pesach 1st), ALL preferences for that Holiday must be reset. Timers will not use any generic Holiday settings for that Holiday. This is not necessary when adding or adjusting a 'SABBATH' or 'YOM TOV' segment.

- 1) From the Home screen, press **SET** to enter the settings menu.
- 2) Use the arrows to scroll to the **Timers** screen.
- 3) Press **SET** to enter the Timer menu and bring up the "SHOW FOR" display (A).
- 4) Use the arrows to scroll through the different timer events.



Sabbath and Yom Kippur will have 1st Night and 1st Day. Yom Tov and remaining Holidays will also have 2nd Night, and 2nd Day.

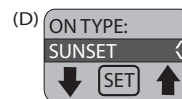
- o Sabbath
- o Pesach End
- o Yom Tov
- o Shavuot
- o R. Hashanah
- o Weekdays
- o Yom Kippur
- o Weekends
- o Sukkot
- o Everyday
- o S. Atzeret
- o Go Back
- o Pesach 1st

If the **🔒** is not selected on the main screen, timer screen will only show weekday, weekend & everyday (daily)!

- 5) Press **SET** to show the timers for the highlighted event.
- 6) Use the arrows to scroll through the various timers for that event. If no timers are programmed for a holiday, 0 of 0 will be displayed, and the On/Off times will show the Sabbath/Yom Tov that is being followed. Weekday timers will be blank until programmed.

ADD/ EDIT TIMER:

- o While viewing a timer for a period (B), press the **SET** button to bring up the Timer options.
- o Use the arrows to scroll through the options: Add, Edit, Remove, or Go Back.
- o Press **SET** button to enter your selection (Add/Edit) and enter the timer editing menus.
- o Use the arrows to select the period for the timer to start. Options will vary depending on the period.
- o Press **SET** to enter your selection for the period, and bring up the "On Type" screen (C).
- o Use the arrows to scroll through the trigger options to start the timer. NOTE: Settings give the option for a fixed time, or a delay based on sunrise or sunset.
- o Press **SET** to enter your selection and begin the time setting process on the On Time/Delay menu. (NOTE: This screen will either prompt you for a time if you chose fixed time, or a delay in hours and minutes from either sunset or sunrise) (D).
- o Use the arrows to change the hour setting. NOTE: The sunset/sunrise options are limited to +/- 3 hours and begin with the "+/-" toggle.
- o Press **SET** to enter your selection and bring up the Off Type trigger menu. NOTE: a fixed time will require you to repeat the process for AM/PM before bringing the Off Type trigger menu.
- o The new/edited timer will be shown in the list of timers for that event chronologically sorted by On time



REMOVING A TIMER:

- o While viewing a timer you want to remove, press the **SET** button to bring up the Timer options.
- o Use the arrows to scroll through the options until **Remove** is highlighted.
- o Press **Set** button to remove the current timer and return to the timer view screen.

Remove all timer segments for a specific Holiday (e.g.: Pesach 1st) to automatically reset that holiday to the generic YOM TOV settings.

IMPORTANT: After timers are set and stored in the system, **ACTIVATE** the timers by selecting **TIMERS** from the main menu and select **YES**. Select **NO** to deactivate the timers.

Restore Factory Settings

At any time, the device can be reset to the factory standards by pressing both arrow buttons at the same time from the home screen and selecting yes when prompted to reset.. Follow the instructions. Choosing **NO** will cause the device to enter a diagnostic mode, follow the instructions. Choosing **NO** will NOT erase ANY previous settings.

NOTES:

- From the home screen press and hold the **DOWN** arrow to see the next timer segment.
- From the home screen press and hold the **UP** arrow to see Sunrise/sunset for that day.
- Use the optional pin code in the **SETUP** menu to ensure settings are not inadvertently changed

Manufactured by: ZMAN Technologies (855) 381-0977
* For more detailed instructions go to: www.zmantech.com

